



INTERNATIONAL JOURNAL OF RESEARCH IN COMMERCE, ECONOMICS AND MANAGEMENT

CONTENTS

Sr. No.	TITLE & NAME OF THE AUTHOR (S)	Page No.
1.	IMPACT OF MARKETING ACTIVITIES ON CONSUMER BASED BRAND EQUITY - A CASE STUDY OF PAKISTAN'S MOBILE SERVICE SECTOR SHAHZAD GHAFOR & UZAIR FAROOQ KHAN	1
2.	UNDERSTANDING THE RELATIONSHIPS OF CORPORATE IMAGE, EMOTION, VALUE, SATISFACTION, AND LOYALTY AMONG AIR PASSENGERS: A CONCEPTUAL MODEL AND EMPIRICAL EVIDENCE DR. HAFEDH IBRAHIM	13
3.	GAME THEORY AS ANOTHER PHILOSOPHICAL FOUNDATION OF POLITICAL MARKETING: EVIDENCE FROM NIGERIA'S ELECTORAL PROCESS DR. ROWLAND E. WORLU	23
4.	CORPORATE UNDERSTANDING OF TAKĀFUL DR. WAHEED AKHTER, MR. HASAN AFZAL & MR. ALI RAZA	30
5.	SMALL AND MEDIUM SCALE ENTERPRISES AS A SURVIVAL STRATEGY FOR EMPLOYMENT GENERATION IN NIGERIA DR. AREMU, MUKAILA AYANDA & DR. (MRS.) ADEYEMI, SIDIKAT LARABA	36
6.	A STUDY ON LABOUR WELFARE FACILITY (WITH REFERENCE TO AFT, PONDICHERRY) S. POONGAVANAM	40
7.	INTERNATIONALIZATION OF INDIAN RUPEE - AN EMPIRICAL STUDY SHRINIVAS R. PATIL & DR. RAMESH R. KULKARNI	45
8.	PROFITABILITY PERFORMANCE OF PUBLIC SECTOR BANKS-AN EMPIRICAL STUDY M. RAJESH & DR. N R V RAMANA REDDY	51
9.	GLOBAL INTEGRATION OF ORGANISATION IS EFFECTIVE THROUGH LEGISLATION: A PERSPECTIVE ON THE CURRENT ECONOMIC ENVIRONMENT DR. S. P. RATH, PROF. BISWAJIT DAS & ANAND IYENGAR	56
10.	NON-PERFORMING ASSETS: A STUDY OF SCHEDULED COMMERCIAL BANKS IN INDIA DR. M. JAYASREE & R. RADHIKA	60
11.	SOLVENCY ANALYSIS OF PUBLIC SECTOR UNDERTAKING: A CASE STUDY OF POWER FINANCE CORPORATION LIMITED (PFCL) DR. S. K. KHATIK & TITTO VARGHESE	64
12.	GLOBAL FINANCIAL CRISIS AND ITS EFFECT ON REAL ESTATE SECTOR IN INDIA DR. SANMAN JAIN N & NISHI S JAIN	71
13.	AN INTROSPECTIVE ON CONSUMER BEHAVIOR ON THE BASIS OF DEMOGRAPHY: A SURVEY (WITH SPECIAL REFERENCE TO FMCGS) DR. B. CHANDRA MOHAN PATNAIK & PRAKASH KUMAR PRADHAN	74
14.	PROFITABILITY ANALYSIS OF ICICI BANK DR. K. MANIKANDAN, DR. S. MANIVEL & DR. R. VELU RAJ	81
15.	WHAT SAVED INDIA FROM THE GLOBAL ECONOMIC MELTDOWN? DR. S. RAGHUNATHA REDDY & DR. A. AMRUTH PRASAD REDDY	86
16.	PERFORMANCE AND RISK ANALYSIS OF MONTHLY INCOME PLANS (MIP) OF SELECTED MUTUAL FUNDS DR. ASHOK KHURANA & DR. BHAVET	90
17.	CONSUMER BUYING BEHAVIOUR OF GREEN PRODUCTS DR. H. C. PUROHIT	94
18.	CORPORATE SOCIAL RESPONSIBILITY STRATEGIES FOR SUSTAINABLE DEVELOPMENT: INDIAN EXPERIENCE DR. VILAS M. KADROLKAR	98
19.	A STUDY ON MEASURING THE PERFORMANCE OF INDIAN BANKING SECTOR IN THE EVENT OF RECENT GLOBAL ECONOMIC CRISIS- AN EMPIRICAL VIEW M. S. RAMARATNAM, R. JAYARAMAN & B. BALAJI SRINIVASAN	106
20.	e-PROCUREMENT USING REVERSE AUCTIONS FOR CONSTRUCTION PROJECTS T. BALADHANDAYUTHAM & DR. SHANTHI VENKATESH	110
21.	PERFORMANCE ANALYSIS WITH SUSTAINABLE GROWTH RATE: A CASE STUDY JAGADISH R. RAIYANI	118
22.	TRANSFER PRICING- A STUDY OF TRANSFER PRICING METHOD USED BY SELECTED COMPANIES MANU KALIA	123
23.	FACTORS IN FACILITATING THE PROCESS OF OBTAINING FUNDS FOR SMES: AN EMPIRICAL STUDY ON VISAKHAPATNAM DISTRICT DR. P. P. CHANDRA BOSE	128
24.	EMPLOYEES' WORKPLACE EMOTIONS IN ORGANIZATIONS R. GOPINATH	133
25.	DISPARITIES IN INDUSTRIAL DEVELOPMENT IN INDIA – AN INTER-STATE ANALYSES SUMAN RANI & SEEMA	140
	REQUEST FOR FEEDBACK	144

CHIEF PATRON

PROF. K. K. AGGARWAL

Chancellor, Lingaya's University, Delhi
Founder Vice-Chancellor, Guru Gobind Singh Indraprastha University, Delhi
Ex. Pro Vice-Chancellor, Guru Jambheshwar University, Hisar

PATRON

SH. RAM BHAJAN AGGARWAL

Ex. State Minister for Home & Tourism, Government of Haryana
Vice-President, Dadri Education Society, Charkhi Dadri
President, Chinar Syntex Ltd. (Textile Mills), Bhiwani

CO-ORDINATOR

DR. BHAVET

Faculty, M. M. Institute of Management, Maharishi Markandeshwar University, Mullana, Ambala, Haryana

ADVISORS

PROF. M. S. SENAM RAJU

Director A. C. D., School of Management Studies, I.G.N.O.U., New Delhi

PROF. M. N. SHARMA

Chairman, M.B.A., Haryana College of Technology & Management, Kaithal

PROF. S. L. MAHANDRU

Principal (Retd.), Maharaja Agrasen College, Jagadhri

EDITOR

PROF. R. K. SHARMA

Dean (Academics), Tecnia Institute of Advanced Studies, Delhi

CO-EDITOR

DR. SAMBHAV GARG

Faculty, M. M. Institute of Management, Maharishi Markandeshwar University, Mullana, Ambala, Haryana

EDITORIAL ADVISORY BOARD

DR. AMBIKA ZUTSHI

Faculty, School of Management & Marketing, Deakin University, Australia

DR. VIVEK NATRAJAN

Faculty, Lomar University, U.S.A.

DR. RAJESH MODI

Faculty, Yanbu Industrial College, Kingdom of Saudi Arabia

PROF. SIKANDER KUMAR

Chairman, Department of Economics, Himachal Pradesh University, Shimla, Himachal Pradesh

PROF. SANJIV MITTAL

University School of Management Studies, Guru Gobind Singh I. P. University, Delhi

PROF. RAJENDER GUPTA

Convener, Board of Studies in Economics, University of Jammu, Jammu

PROF. NAWAB ALI KHAN

Department of Commerce, Aligarh Muslim University, Aligarh, U.P.

PROF. S. P. TIWARI

Department of Economics & Rural Development, Dr. Ram Manohar Lohia Avadh University, Faizabad

DR. ASHOK KUMAR CHAUHAN

Reader, Department of Economics, Kurukshetra University, Kurukshetra

DR. SAMBHAVNA

Faculty, I.I.T.M., Delhi

DR. MOHENDER KUMAR GUPTA

Associate Professor, P. J. L. N. Government College, Faridabad

DR. SHIVAKUMAR DEENE

Asst. Professor, Government F. G. College Chitguppa, Bidar, Karnataka

ASSOCIATE EDITORS

PROF. ABHAY BANSAL

Head, Department of Information Technology, Amity School of Engineering & Technology, Amity University, Noida

PARVEEN KHURANA

Associate Professor, Mukand Lal National College, Yamuna Nagar

SHASHI KHURANA

Associate Professor, S. M. S. Khalsa Lubana Girls College, Barara, Ambala

SUNIL KUMAR KARWASRA

Vice-Principal, Defence College of Education, Tohana, Fatehabad

DR. VIKAS CHOUDHARY

Asst. Professor, N.I.T. (University), Kurukshetra

TECHNICAL ADVISORS

MOHITA

Faculty, Yamuna Institute of Engineering & Technology, Village Gadholi, P. O. Gadholi, Yamunanagar

AMITA

Lecturer, E.C.C., Safidon, Jind

FINANCIAL ADVISORS

DICKIN GOYAL

Advocate & Tax Adviser, Panchkula

NEENA

Investment Consultant, Chambaghat, Solan, Himachal Pradesh

LEGAL ADVISORS

JITENDER S. CHAHAL

Advocate, Punjab & Haryana High Court, Chandigarh U.T.

CHANDER BHUSHAN SHARMA

Advocate & Consultant, District Courts, Yamunanagar at Jagadhri

CALL FOR MANUSCRIPTS

We invite unpublished novel, original, empirical and high quality research work pertaining to recent developments & practices in the area of Computer, Business, Finance, Marketing, Human Resource Management, General Management, Banking, Insurance, Corporate Governance and emerging paradigms in allied subjects. The above mentioned tracks are only indicative, and not exhaustive.

Anybody can submit the soft copy of his/her manuscript **anytime** in M.S. Word format after preparing the same as per our submission guidelines duly available on our website under the heading guidelines for submission, at the email addresses, **info@ijrcm.org.in** or **infoijrcm@gmail.com**.

GUIDELINES FOR SUBMISSION OF MANUSCRIPT

1. **COVERING LETTER FOR SUBMISSION:**

Dated: _____

The Editor

IJRCM

Subject: **Submission of Manuscript in the Area of** _____ **(Computer/Finance/Marketing/HRM/General Management/other, please specify).**

Dear Sir/Madam,

Please find my submission of manuscript titled ' _____ ' for possible publication in your journal.

I hereby affirm that the contents of this manuscript are original. Furthermore It has neither been published elsewhere in any language fully or partly, nor is it under review for publication anywhere.

I affirm that all author (s) have seen and agreed to the submitted version of the manuscript and their inclusion of name(s) as co-author(s).

Also, if our/my manuscript is accepted, I/We agree to comply with the formalities as given on the website of journal & you are free to publish our contribution to any of your journals.

Name of Corresponding Author:

Designation:

Affiliation:

Mailing address:

Mobile & Landline Number (s):

E-mail Address (s):

2. **INTRODUCTION:** Manuscript must be in English prepared on a standard A4 size paper setting. It must be prepared on a single space and single column with 1" margin set for top, bottom, left and right. It should be typed in 12 point Calibri Font with page numbers at the bottom and centre of the every page.
3. **MANUSCRIPT TITLE:** The title of the paper should be in a 12 point Calibri Font. It should be bold typed, centered and fully capitalised.
4. **AUTHOR NAME(S) & AFFILIATIONS:** The author (s) full name, designation, affiliation (s), address, mobile/landline numbers, and email/alternate email address should be in 12-point Calibri Font. It must be centered underneath the title.
5. **ABSTRACT:** Abstract should be in fully italicized text, not exceeding 250 words. The abstract must be informative and explain background, aims, methods, results and conclusion.
6. **KEYWORDS:** Abstract must be followed by list of keywords, subject to the maximum of five. These should be arranged in alphabetic order separated by commas and full stops at the end.

7. **HEADINGS:** All the headings should be in a 10 point Calibri Font. These must be bold-faced, aligned left and fully capitalised. Leave a blank line before each heading.
8. **SUB-HEADINGS:** All the sub-headings should be in a 8 point Calibri Font. These must be bold-faced, aligned left and fully capitalised.
9. **MAIN TEXT:** The main text should be in a 8 point Calibri Font, single spaced and justified.
10. **FIGURES & TABLES:** These should be simple, centered, separately numbered & self explained, and titles must be above the tables/figures. Sources of data should be mentioned below the table/figure. It should be ensured that the tables/figures are referred to from the main text.
11. **EQUATIONS:** These should be consecutively numbered in parentheses, horizontally centered with equation number placed at the right.
12. **REFERENCES:** The list of all references should be alphabetically arranged. It must be single spaced, and at the end of the manuscript. The author (s) should mention only the actually utilised references in the preparation of manuscript and they are supposed to follow **Harvard Style of Referencing**. The author (s) are supposed to follow the references as per following:

- All works cited in the text (including sources for tables and figures) should be listed alphabetically.
- Use (ed.) for one editor, and (ed.s) for multiple editors.
- When listing two or more works by one author, use --- (20xx), such as after Kohl (1997), use --- (2001), etc, in chronologically ascending order.
- Indicate (opening and closing) page numbers for articles in journals and for chapters in books.
- The title of books and journals should be in italics. Double quotation marks are used for titles of journal articles, book chapters, dissertations, reports, working papers, unpublished material, etc.
- For titles in a language other than English, provide an English translation in parentheses.
- Use endnotes rather than footnotes.
- The location of endnotes within the text should be indicated by superscript numbers.

PLEASE USE THE FOLLOWING FOR STYLE AND PUNCTUATION IN REFERENCES:

Books

- Bowersox, Donald J., Closs, David J., (1996), "Logistical Management." Tata McGraw, Hill, New Delhi.
- Hunker, H.L. and A.J. Wright (1963), "Factors of Industrial Location in Ohio," Ohio State University.

Contributions to books

- Sharma T., Kwatra, G. (2008) Effectiveness of Social Advertising: A Study of Selected Campaigns, Corporate Social Responsibility, Edited by David Crowther & Nicholas Capaldi, Ashgate Research Companion to Corporate Social Responsibility, Chapter 15, pp 287-303.

Journal and other articles

- Schemenner, R.W., Huber, J.C. and Cook, R.L. (1987), "Geographic Differences and the Location of New Manufacturing Facilities," Journal of Urban Economics, Vol. 21, No. 1, pp. 83-104.

Conference papers

- Chandel K.S. (2009): "Ethics in Commerce Education." Paper presented at the Annual International Conference for the All India Management Association, New Delhi, India, 19–22 June.

Unpublished dissertations and theses

- Kumar S. (2006): "Customer Value: A Comparative Study of Rural and Urban Customers," Thesis, Kurukshetra University, Kurukshetra.

Online resources

- Always indicate the date that the source was accessed, as online resources are frequently updated or removed.

Website

- Kelkar V. (2009): Towards a New Natural Gas Policy, Economic and Political Weekly, Viewed on February 17, 2011 <http://epw.in/epw/user/viewabstract.jsp>

PERFORMANCE ANALYSIS WITH SUSTAINABLE GROWTH RATE: A CASE STUDY

JAGADISH R. RAIYANI

RESEARCH SCHOLAR, SINGHANIA UNIVERSITY, AJMER

ASST. PROFESSOR

FACULTY OF COMMERCE & MANAGEMENT

SHREE MAHARSHI DAYANAND SARASWATI MBA COLLEGE

TANKARA

ABSTRACT

Achieving the sustainable growth rate is the prime concern of managers of companies, whether small or big. But, in a fast changing economic, political and competitive environment, achieving the sustainable growth is not an easy task, especially in the present highly complex global environment. Consumer attitude, for instance, changed considerably over the last few decades. The objective of the study is to identify the components of SGR and the efficiency in their usage; analyze the impact of the components on the SGR and relationship between SGR and actual growth rate (AGR). To evaluate this, some important traditional performance measures such as Retention Ratio Analysis, Leverage Analysis, Asset Turnover Analysis, and Profitability Analysis, Correlation Analysis, Overall Performance Analysis along with a new performance measure called Sustainable Growth Rate (SGR) have been used. This research study further throws light on the extensive use of statistical techniques for analyzing the financial performance of the sample companies. The paper also furnishes a summary of the main findings and conclusions in the end. This study empirically tests the strength of the relationship between SGR and AGR in Indian IT Companies for the period between 1999 and 2007. This data have been analyzed with the help of statistical tools like ratios, percentages, averages and trend analysis, The Karl Pearson's correlation coefficient (r), students' 't' test. The statistical technique of hypothesis testing has further been used to analyze the significance of differences between sustainable and actual Growth Rate. This paper also substantiates the above arguments and illustrates how the two firms, viz. Wipro and Infosys have used the internally generated funds to exploit the fast growing IT market and become successful.

KEYWORDS

Shareholders' value, Sustainable Growth Rate (SGR), Ratio Analysis, Correlation Analysis.

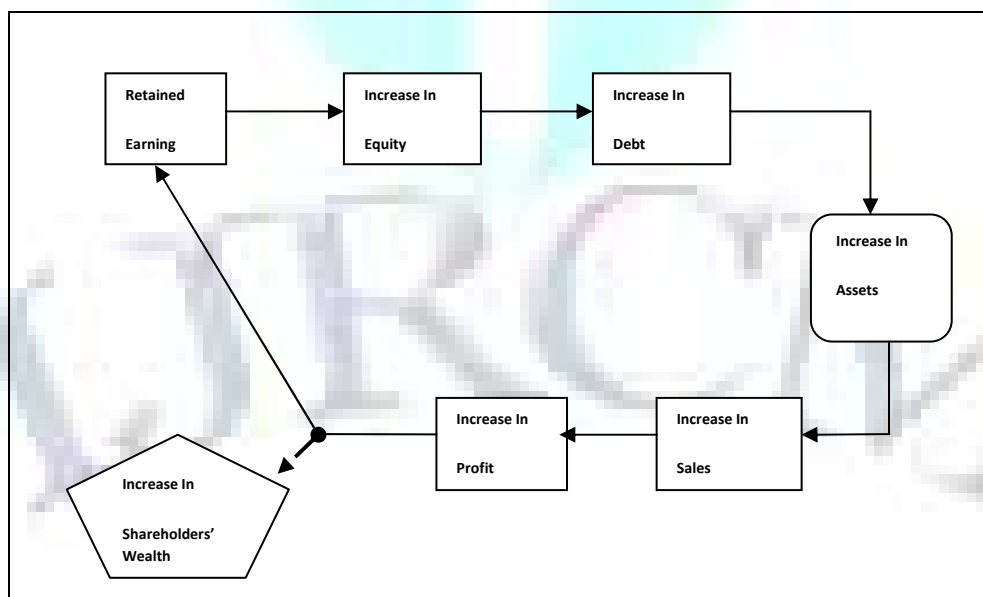
INTRODUCTION

In the present era of highly competitive environment, companies are striving hard to earn a reasonably good profit to increase the shareholders' wealth. The increase in the wealth of the shareholders depends upon a target profit which can be achieved within a reasonable period of time. Now the question remains- how an investor is let to know how long earnings growth can last? The easy way to gauge such a situation is by calculating the company's sustainable growth rate (SGR).

DEFINITION AND MEANING OF SGR

A company's SGR is the maximum growth rate with the use of internally generated funds without changing its operating and financial policies. According to Robert C. Higgins (2001, 2007), sustainable growth represents the maximum sales or asset growth that a firm can support using both internally generated funds and debt. SGR is calculated by multiplying the company's return on equity (ROE) by the proportion of its retained earnings (RE). According to Higgins, SGR depends upon the change in equity in a financial year divided by opening equity without any additional equity introduced during the year. Such a change is possible only through the retained earnings. Thus, the funds generated through retained earnings increase the net worth of the firm and with the increase in the net worth, the firm can borrow more funds which would enable the firm to increase its asset base. The increase in assets results in increase in operation which ultimately results in increase in profit and thereby increase in retained earnings. The following figure depicts the whole process:

FLOW OF FUNDS THROUGH RETAINED EARNINGS



Flow of funds through retained earnings. The following figure depicts the whole process:

Higgins used the following equation to workout SGR:

$$\text{SGR} = \frac{\text{Change in equity (without new additions)}}{\text{Opening equity}} = \frac{\text{Retained earnings}}{\text{Opening equity}}$$

Using DuPont analysis, the equation can be rewritten as:

$$\text{SGR} = \frac{\text{Retained earnings}}{\text{Profit}} \times \frac{\text{Profit}}{\text{Sales}} \times \frac{\text{Sales}}{\text{Assets}} \times \frac{\text{Assets}}{\text{Opening equity}}$$

SGR as determined above is based on the following assumptions:

- The firm increases the sales as rapidly as the market conditions permit;
- Management is unwilling to sell new equity;
- The firm's current capital structure remains unchanged;
- The firm's current dividend policy remains unchanged;
- The company maintains a constant assets turnover ratio; and
- In the long-run, all costs are variable and will become a fixed percentage of sales.

Though the growth through the internally generated funds is the best way of doing business, there is no constraint on the part of the management to raise new equity funds to expand its business operations. But, in practice, firms are reluctant to do so because such new issues involve high floatation costs, possible dilution of earnings per share (EPS) and loss of control of management. Further, a company can increase debt only if it has unused debt capacity with assets that can be used as security and its debt-equity ratio is reasonable in relation to the industry. Also, quite often, the reduction of dividends has a negative impact on the company's share prices. In such situations, the companies adopt internal control measures such as cutting the costs or enhancing the manufacturing and logistics efficiencies to improve the profit margin. In addition, firms can outsource more activities from outside vendors or lease production facilities and equipments, which have the effect of improving the asset turnover ratio.

As opposed to Higgins's formula for SGR, Arvind Ashta (2008) in his recent paper used opening assets in the assets turnover ratio and leverage ratio and refined the formula as follows:

$$\begin{aligned} \text{SGR} &= \frac{\text{Change in equity}}{\text{Opening equity}} \\ &= \frac{\text{Retained earnings}}{\text{Profit}} \times \frac{\text{Profit}}{\text{Sales}} \times \frac{\text{Sales}}{\text{Opening assets}} \times \frac{\text{Opening assets}}{\text{Opening equity}} \end{aligned}$$

Arvind Ashta used the opening assets in both the ratios based on the following arguments:

- Relating sales to closing assets seems to create an impression that sales create assets, which may ultimately be true, but the fact is that a firm starts its operation in any financial year with the opening assets rather than the closing assets.
- The asset or equity may be added on any date of the year of operation, but once it is considered that a firm's growth depends upon opening equity as stated by Higgins, then it is more logical to depend on the opening assets as well to start the flow.
- It is also true that the fixed assets added during a particular year would not bring the desired returns in the same year rather than in the year after or more. In this paper also, the equation used by Arvind Ashta is considered more appropriate than Higgins equation due to the arguments posed by Arvind Ashta. The ratios illustrated in Table - 4 of Infosys also substantiate his arguments. Infosys has never used financial leverage in all the nine years of the study period. Using Arvind Ashta's equation (opening assets divided by opening equity), the average leverage ratio of Infosys is worked out to be 1 which indicates that Infosys has totally relied on equity rather than debt. (Financial leverage is the ability of a firm to use debt financing to increase the profitability. Debt is a cheaper source of finance as well as the interest on debt is tax deductible. Researches indicate that a firm is more profitable if it uses more debt in its capital structure.) If the leverage ratio of Infosys is calculated using Higgins formula, the average leverage ratio is 1.3 which is illogical and leads to wrong conclusions.

VALUE CREATION AND CASH MANAGEMENT

The best and most appropriate way a firm can create value is by increasing the sales, thereby increasing the total assets (such as fixed assets, debtors and inventory) to produce and support additional sales. Obviously, these results in spontaneous increase in trade creditors to provide the additional short-term finance needed. In addition to the trade creditors, additional cash is needed to finance extra fixed assets and extra working capital.

Growth and the resultant cash management are measured by taking the difference between the SGR and annual sales growth rates (AGR), which is referred to as sustainable growth challenge (SGC), (Higgins, 2003). If the difference is positive (SGR>AGR), it indicates that there is a cumulative cash surplus. A negative difference (SGR<AGR) means that the firm is in short of cash.

For a firm with several departments or strategic business units (SBUs), it has several alternatives to invest the excess cash to grow further, thereby expanding the company internally or externally through acquisition of similar or related businesses. If there is no opportunity to grow internally or externally, the firm may be tempted to opt for unrelated, diversified acquisitions. Historically, it has been shown that these kind of unrelated diversifications rarely work. A firm should rather avoid it as a general rule.

If the SGR is consistently less than AGR, the firms create value, but are growing too fast. The danger is that if sales grow too quickly and consistently over SGR, there is not enough spontaneous finance from retained income and debt to finance additional fixed assets and to supply the working capital requirements. This causes cash shortfall that accumulates if the growth in sales is not limited to sustainable level. There are two options in this situation — to reduce dividend payments and thereby increasing the retention ratio or to raise additional capital by borrowing or by new issue of shares. If it is not possible to raise new capital, the firm has no other choice but to cut back on some of its operations or to reduce the overall growth rate to the level of SGR.

CHALLENGES OF SUSTAINABLE GROWTH RATE (SGR)

Business experts argue that achieving sustainable growth is not possible without paying attention to two important aspects, viz. growth strategy and growth capability. Companies that fail to give adequate attention to one aspect or the other are doomed to fail in their efforts to establish practices of sustainable growth in the long run. For instance, if a company has an excellent growth strategy in place, but has not taken efforts to increase its infrastructural facilities, long term growth is impossible. Similarly, a company that has sufficient resources and infrastructural facilities, but a poor growth strategy will also fail in the long-run. Achieving the sustainable growth rate is the prime concern of managers of companies, whether small or big. But, in a fast changing economic, political and competitive environment, achieving the sustainable growth is not an easy task, especially in the present highly complex global environment. Consumer attitude, for instance, changed considerably over the last few decades. They are more discriminative which compels the firms to attract customers by adding more value to the products and by offering innovative services. Similarly, competition is keen in almost all the industries, which have seen unprecedented breakdowns in the barriers that formerly separated them; therefore, companies must look forward to identify their competitors and their strategic choices in the search for creating sustainable growth.

Based on foregoing discussions, a study has been conducted using the audited financial statements of two leading IT firms, viz. Wipro and Infosys and the results are discussed in the following paragraphs.

OBJECTIVE OF THE STUDY

- To identify the components of SGR and the efficiency in their usage;
- To study the impact of the components on the SGR; and
- To study the relationship between SGR and actual growth rate (AGR).

PERIOD OF THE STUDY

The study is conducted based on the audited financial statements of Wipro and Infosys for a period of 9 years (1998-99 to 2006-07).

RESEARCH DESIGN

1. Simple Ratio Analysis
2. Correlation Analysis with Hypothesis test.

ANALYSIS AND DISCUSSION

The components of capital employed by the two companies are presented in Table-1. Both the companies have relied much on the internally generated funds rather than debt or equity. Both the firms have exploited the market opportunities to improve their AGR which enabled them to use the internal funds rather than the funds from external sources.

TABLE 1: COMPONENTS OF CAPITAL EMPLOYED

Year	Wipro			Infosys		
	SC	R&S	Loan	SC	R&S	Loan
1999	9	57	34	6	94	0
2000	9	84	7	4	96	0
2001	2	95	2	2	98	0
2002	2	97	1	2	98	0
2003	1	97	2	1	99	0
2004	1	96	3	1	99	0
2005	3	96	3	3	97	0
2006	4	95	1	2	98	0
2007	3	94	2	3	97	0

SC = Share capital; R&S = Reserves & Surplus

The summarized results are shown in Table - 2 and the calculations of SGR and AGR of Wipro and Infosys are presented in Table - 3 and Table - 4 respectively.

TABLE 2: SUMMARY RESULT

	Ave	CV	CAGR
Wipro		%	%
Profit Margin	0.19	20	15
Retention Ratio	0.75	35	35
ATR	2.2	32	0
Assets/NW	1.09	15	-5
Infosys	Ave.	CV	CAGR
Profit Margin	0.29	9	-2
Retention Ratio	0.71	33	34
ATR	1.85	12	5
Assets/NW	1	0	0

Ave: Average CAGR-Compounded Annual Growth Rate

COEFFICIENT OF VARIATION (CV)

It can be seen that the average SGR of Wipro (Table - 3) is greater than the average AGR, whereas the SGR is less than AGR in Infosys (Table -4). Also, all the component ratios of SGR were higher except the profit margin in the case of Wipro as compared to Infosys.

TABLE 3: COEFFICIENT OF VARIATION (WIPRO)

Rs. Crores

WIPRO										
Details/Year	1999	2000	2001	2002	2003	2004	2005	2006	2007	Ave.
Sales	1831	2360	3134	3477	4040	5135	7233	10227	13684	6161
PAT	112	248	668	866	813	915	1495	2020	2842	1233
Total assets	828	828	2010	2559	3400	3608	4956	6478	9555	4174
Net worth	547	770	1965	2533	3330	3508	4894	6428	9317	4093
Dividend	8	10	14	23	26	761	401	813	1001	381
RE	104	238	654	843	787	154	1094	1207	1841	852
Ratios										
Profit Margin		0.11	0.21	0.25	0.20	0.18	0.21	0.20	0.21	0.19
ATR		2.85	3.79	1.73	1.58	1.51	2.00	2.06	2.11	2.20
Assets/NW		1.51	1.08	1.02	1.01	1.02	1.03	1.01	1.01	1.09
ROE		0.45	0.87	0.44	0.32	0.27	0.43	0.41	0.44	0.45
Retention Ratio		0.96	0.98	0.97	0.97	0.17	0.73	0.60	0.65	0.75
SGR (ROE*RE)		0.44	0.85	0.43	0.31	0.05	0.31	0.25	0.29	0.36
AGR		0.29	0.33	0.11	0.16	0.27	0.41	0.41	0.34	0.29

TABLE 4: COEFFICIENT OF VARIATION (INFOSYS)

Rs. Crores

INFOSYS										
Details/Year	1999	2000	2001	2002	2003	2004	2005	2006	2007	Ave.
Sales	509	882	1901	2604	3623	4761	6860	9028	13149	5351
PAT	135	294	629	808	958	1243	1904	2421	3783	1505
Total assets	574	833	1390	2080	2861	3253	5242	6897	11162	4215
Net worth	574	833	1390	2080	2861	3253	5242	6897	11162	4215
Dividend	12	30	66	132	191	973	352	1412	751	488
RE	123	264	563	676	767	270	1552	1009	3032	1017
Ratios										
Profit Margin		0.33	0.33	0.31	0.26	0.26	0.28	0.27	0.29	0.29
ATR		1.54	2.28	1.87	1.74	1.66	2.11	1.72	1.91	1.85
Assets/NW		1.00	1.00	1.00	1.00	1.00	1.00	1.00	1.00	1.00
ROE		0.51	0.76	0.58	0.46	0.43	0.59	0.46	0.55	0.54
Retention Ratio		0.90	0.90	0.84	0.80	0.22	0.82	0.42	0.80	0.71
SGR (ROE*RE)		0.46	0.68	0.49	0.37	0.09	0.48	0.19	0.44	0.40
AGR		0.73	1.16	0.37	0.39	0.31	0.44	0.32	0.46	0.52

PAT - Profit after tax, RE - Retained earnings, ATR - Asset turnover ratio, NW - Net Worth, AGR - Actual sales growth rate

FIGURE 1: WIPRO

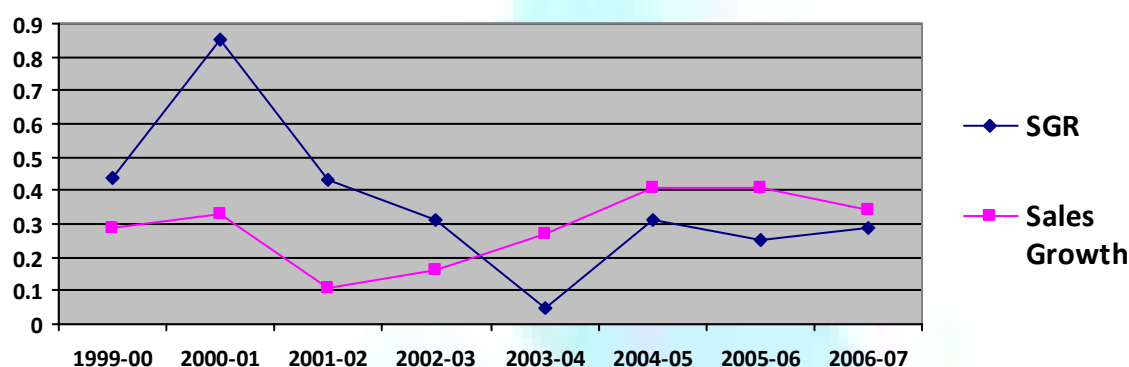
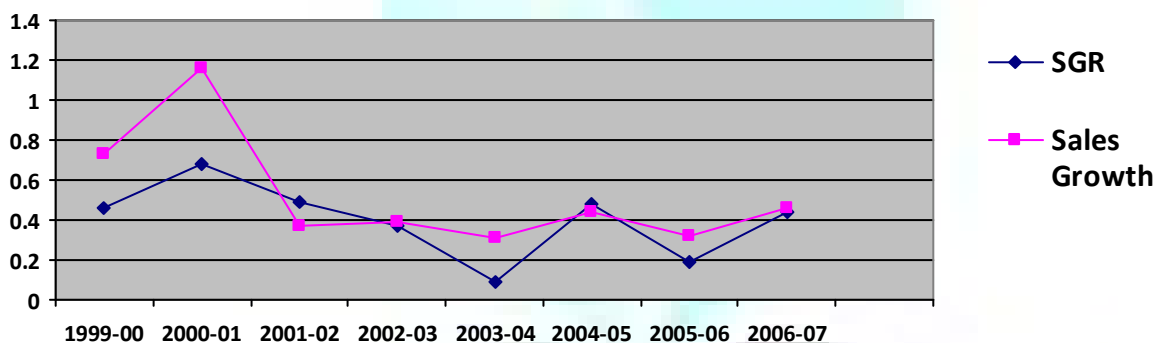


FIGURE 2: INFOSYS



Further analysis of Table - 3 & 4 and Figures 1 & 2 reveals that Wipro had very high SGRs in the earlier years, i.e. from 2000 to 2003, after that the SGRs dropped below the AGRs. The reverse was the case with Infosys. The AGRs were higher than the SGRs in all the years except in the years 2002 and 2005 in which the AGRs dropped marginally below the SGRs.

COMPONENT WISE ANALYSIS

I. PROFITABILITY ANALYSIS

The average profit margin was 19 per cent in the case of Wipro, whereas, the average profit margin of Infosys was 29 per cent which indicates better performance of Infosys as compared to Wipro. The coefficient of variation is 20 per cent and 9 per cent respectively, also that indicates better consistency in the case of Infosys as compared to Wipro, but the compounded annual growth rate (CAGR) was 2 per cent as compared to Wipro's growth rate of 15 per cent.

TABLE 5: MAJOR COST COMPONENTS (AS A PERCENTAGE OF SALES)

Wipro	2000	2001	2002	2003	2004	2005	2006	2007	Ave.
RM/sales	0.43	0.32	0.31	0.28	0.25	0.24	0.24	0.15	0.28
EC/sales	0.11	0.13	0.14	0.16	0.17	0.40	0.42	0.42	0.24
S&A/sales	0.25	0.26	0.25	0.31	0.34	0.09	0.08	0.08	0.21
Infosys	2000	2001	2002	2003	2004	2005	2006	2007	Ave.
RM/sales	0.05	0.05	0.04	0.06	0.06	0.09	0.10	0.11	0.07
EC/Sales	0.38	0.38	0.43	0.46	0.50	0.46	0.47	0.48	0.44
S&A/sales	0.17	0.16	0.12	0.13	0.11	0.10	0.09	0.08	0.12

0

Further analysis of the profitability of both the firms (Table - 5) reveals that Infosys has spent an average of around 12 per cent of the sales value towards selling and administration expenses, whereas Wipro has spent more than 20 per cent which has caused lesser profit margin as compared to Infosys.

The return on equity was also very high in Infosys as compared to Wipro. The average ROE of Infosys was 54 per cent as compared to 46 per cent ROE of Wipro. High ROE coupled with high retention ratio has enabled both the firms to trade on equity rather than relying on external debt.

II. ASSET TURNOVER ANALYSIS

The asset turnovers of both the firms were exceptionally high compared with any industrial standards. Wipro's asset turnover was more than double (average ATR of 2.2 times), whereas the ATR of Infosys was 1.85 times, indicates better utilization of assets by Wipro as compared to Infosys. But, in terms of growth rates and consistency, Infosys has shown better results with the coefficient of variation of 12 per cent and CAGR of 5 per cent in comparison with Wipro's coefficient of variation of 32 per cent and nil CAGR.

III. LEVERAGE ANALYSIS

It is evident from the data that both the firms were conservative in using external debt during the entire study period. Wipro has used high amount of debt in the first year (1999). then gradually reduced the debt resulting in a substantial decrease in the leverage, ratio from 1.51 times in 1999 to 1.08 times in 2000 and further reduced to a marginal level of 1.01 times during the later years, resulting in a negative growth rate of 5 per cent and the coefficient of variation of 15 per cent. But, Infosys has never used external borrowings; as a result the leverage ratio remained at 1 during the entire study period.

IV. RETENTION RATIO ANALYSIS

Both Wipro and Infosys have adopted a conservative dividend policy except during a couple of years which is evident from Tables - 3 and 4 respectively. The average retention rate was 75 per cent in the case of Wipro and 71 per cent in the case of Infosys, which again substantiates Higgins logic. In terms of growth rate also, both the firms have shown almost the same results with the CAGR of 35 per cent and 34 per cent respectively and the coefficient of variation of 35 per cent and 33 per cent respectively. The coefficient of variations of both the companies were very high because of the lowest retention ratio of 17 per cent of Wipro and 22 per cent of Infosys, both happened in the year 2004.

V. OVERALL PERFORMANCE

TABLE - 6: GROWTH RATES

	Wipro	Infosys
CAGR of Net Worth (%)	47	46
CAGR of net assets (%)	41	46

Table - 6 shows the growth rates of both the firms in terms of net worth and net assets. Both the firms have a CAGR of more than 45 per cent within a span of just 9 years (47% and 46% respectively), but the CAGR of net assets is far higher in the case of Infosys (The CAGR of Wipro's net assets was 41 per cent and that of Infosys was 46 per cent). In short, it can be concluded that Infosys has outperformed Wipro in terms of sustainable growth as stated by Higgins, i.e. the growth through internally generated funds.

VI. CORRELATION ANALYSIS

As discussed earlier, if targeted sales increase faster than the SGR, the sustainable growth challenge (SGC) is positive and operating and financial adjustments need to be made in order to restore an accounting and operating balance such that $SGC \rightarrow 0$. This is accomplished by increasing the SGR. In contrast, if the SGC is negative which may occur with scale inefficiencies in the utilization of existing resources, targeted sales growth will be lower than the SGR. Consequently, unproductive cash surpluses will increase and to drive $SGC \rightarrow 0$ adjustments must be made to decrease the SGR. Hence, always there is a close relationship existing between the SGR and AGR. In this part of the study, an attempt is made to find the correlation between SGR and AGR to ascertain then "relationship and also to test whether the computed values of such correlation coefficient are significant or not by using student's 't' test.

Table - 7: CORRELATION ANALYSIS

	r	t
Wipro	-0.01	/0.014/
Infosys	0.75	/2.78/

The Karl Pearson's correlation coefficient (r) of Wipro is -0.01 and that of Infosys is 0.75 (Table -7) which indicates that the degree of relationship between SGR and AGR is marginal and negligible in the case of Wipro, but there is a strong positive association between the two variables in the case of Infosys. In order to examine whether there is a significant difference between SGR and AGR, students 't' test is applied. The two hypothesis are:

- Null hypothesis (H_0) - There is no significant difference between SGR and AGR; and
- Alternative hypothesis (H_1) - There is significant difference between SGR and AGR.

The calculated values of 't' of Wipro and Infosys are 0.014 and 2.78 respectively (Table 7). The critical value of 't' with 6 (n-2) degrees of freedom and at 5% level of significance is 1.943. As the calculated value of Wipro is much less than the table value, we accept the null hypothesis and conclude that there is no significant association between SGR and AGR. In the case of Infosys, the calculated value (2.78) is much higher than the table value. Hence, the null hypothesis is rejected and it is concluded that the association between the two variables in the case of Infosys is significant.

CONCLUSION

Monitoring the current situation and progress of a company by mapping its sustainable growth rate helps managers to ensure that the scarce resources are allocated wisely. Also, it ensures the company's operating and financial policies go in consistency with the sustainable growth rate and serve as valuable tools in the process of coordinating plans and actions by combining two sets of ratios of SGR equation. The first set includes the retention ratio and leverage ratio whereas the second set includes the asset turnover ratio and profitability ratio. The former two ratios can be described as policy statements of a company reflecting the management's attitude towards the risks and opportunities it expects in the future and the latter two ratios are the outcomes of managerial action; the end result is the overall improvements in its operational and financial performances. In short, using the four component ratios, SGR concept serves as the best tool for prospective firms to fix a target growth rate using the internally generated funds and improve their operating and financial performances over a period of time. This paper also substantiates the above arguments and illustrates how the two firms, viz. Wipro and Infosys have used the internally generated funds to exploit the fast growing IT market and become successful.

REFERENCES

1. Gopal Krsihna Swami. L (2000), "A forecasting model for sustainable corporate growth", The Management Accountant, pp.579-584.
2. Ross, Westerfield, Jaffe (2004), "Corporate Finance", Tata McGraw-Hill, pp.51-54.
3. Churchill, N.C. & Mullins, J.W. (2001), "How fast can your company afford to grow?", HBR.
4. Clark, et al (1985). "Strategic Planning and Sustainable Growth", Columbia Journal of World Business, pp 47-51.
5. Smith, R.L. & Smith, J.K. (2004), "Entrepreneurial Finance", Hoboken: Wiley.
6. www.answers.com/topic/sustainablegrowth7cat-biz.fm.
7. www.referenceforbusiness.com/encyclopedia/str/the+sustainable+growth.html.
8. Cesar L Escalante, et al, "Farm-level evidence on the sustainable growth paradigm from grain and livestock farms", www.ageconsearch.umn.edu.pdf.

REQUEST FOR FEEDBACK

Esteemed & Most Respected Reader,

At the very outset, International Journal of Research in Commerce and Management (IJRCM) appreciates your efforts in showing interest in our present issue under your kind perusal.

I would like to take this opportunity to request to your good self to supply your critical comments & suggestions about the material published in this issue as well as on the journal as a whole, on our E-mails i.e. **info@ijrcm.org.in** or **infoijrcm@gmail.com** for further improvements in the interest of research.

If your good-self have any queries please feel free to contact us on our E-mail **infoijrcm@gmail.com**.

Hoping an appropriate consideration.

With sincere regards

Thanking you profoundly

Academically yours

Sd/-

Co-ordinator